



**CHARLES L. WHITNEY
EDUCATION CENTER**

a project of

© 2008 ErnestOchsner.com

Prairie Plains Resource Institute

PRAIRIE PLAINS RESOURCE INSTITUTE'S MISSION
Maintaining and restoring Nebraska
ecosystems – creating opportunities for education,
stewardship and community development.

Prairie Plains Resource Institute is an educational land trust founded in 1980. It is a 501(c)(3) nonprofit governed by a volunteer board of directors, funded by memberships, contributions, land income, collaborative project funding, bequests and grants.

The mission of PPRI is being carried out through the following project areas:

LAND IN TRUST

OWNS SEVEN PRAIRIE PROPERTIES IN NEBRASKA, TOTALING 5800 ACRES; EXHIBITING DIVERSE GREAT PLAINS NATURAL RESOURCES AND SCENERY.

LAND EDUCATION

SOAR - SUMMER ORIENTATION ABOUT RIVERS DAYCAMP FOR YOUTH. MANY FUTURE EDUCATIONAL PROGRAMS AT THE CHARLES L. WHITNEY EDUCATION CENTER AND ALL PRAIRIE PLAINS PROPERTIES. •

**... AND A NEW
INTERNSHIP PROGRAM**

COLLEGE UNDERGRADUATE AND GRADUATE STUDENTS INVOLVED IN A HANDS-ON RESTORATION PROCESS, WITH ECOLOGICAL FIELD WORK, STUDY AND INDEPENDENT PROJECTS.

**HIGH DIVERSITY
PRAIRIE RESTORATION**

SINCE 1980, PLANTED 70 PRAIRIES IN 30 NEBRASKA COUNTIES, TOTALING MORE THAN 6,000 ACRES.

**... AND A NEW
MULTIPLE-USE VISION
FOR ITS APPLICATION**

A 100-YEAR PLAN TO RESTORE HIGH DIVERSITY PRAIRIE ALONG GREAT PLAINS STREAMS AND RIVERS. **THE VISION:** *RIBBONS OF PRAIRIE THROUGH THE GREAT AMERICAN BREADBASKET.* **GOALS:** PLANTING PRAIRIE FOR PEOPLE, WATER QUALITY AND QUANTITY, WILDLIFE AND POLLINATOR INSECT HABITAT, SUSTAINABLE RANGE AGRICULTURE, RECREATION, BEAUTIFICATION, BIODIVERSITY, COMMUNITY DEVELOPMENT, LINKING PEOPLE, TOWNS AND WATERSHEDS.

**PUBLIC PARTICIPATION IN
RESOURCE MANAGEMENT**

COLLABORATIVE PLANNING AND PUBLIC PARTICIPATION; CREATING AND FACILITATING SELF-DIRECTED WORKING GROUPS TO ACCOMPLISH NATURAL RESOURCE AND COMMUNITY DEVELOPMENT GOALS.

Cover: *Gjerloff Landing, Platte River*, 50" x 60" oil on linen, by Ernest Ochsner, which will hang in the entry of the Center.

CHARLES L. WHITNEY EDUCATION CENTER

DESIGN & CONSTRUCTION:

- The Center's architectural design is based on the recycled roof of a historic local barn, which was moved onto an insulated concrete form foundation in 2007.
- Its lower walkout level will include a large activity space, office, screened porch, kitchen and restrooms; the main entry level includes two class rooms and lab space, a conference room and the great room under the rustic original barn rafters.
- Volunteers will continue to contribute to the construction.
- The building will be energy efficient, with geothermal temperature control.

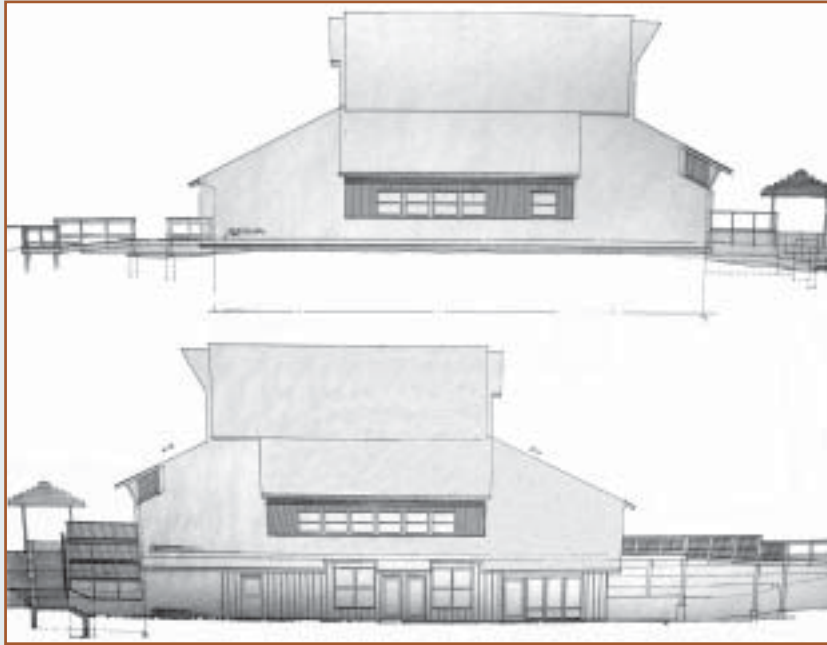
Education Center Capital Campaign - \$1.88 million

| | | |
|------|-------------------------------|------------------|
| GOAL | Land | \$482,000 |
| | Projected Construction Cost: | \$900,000 |
| | <u>Maintenance Endowment:</u> | <u>\$500,000</u> |
| | Total | \$1,882,000 |

| | | |
|--------|--|------------------|
| RAISED | Nebraska Environmental Trust funds for 390-acre Griffith property | \$482,000 |
| | Kiewit Challenge | \$50,000 |
| | <u>Other raised so far:</u> | <u>\$310,000</u> |
| | Total as of February 2010: | \$842,000 |

| | |
|------------------------------|-------------|
| Funds needed, February 2010: | \$1,042,000 |
|------------------------------|-------------|

Next steps: Frame roof dormers on three sides; complete steel roofing, Electrical, septic and plumbing, insulation, drywall and finish work. To complete Center: approximately \$550,000.



Rendering of completed rooflines, top: west side, bottom: east side with walkout.



Volunteers assembling insulated concrete forms and framing.



Semi tractor ready to turn the barn roof around on the prairie hill overlooking the Platte River Valley.



Sands Barn Roof on new foundation, February 9, 2007.

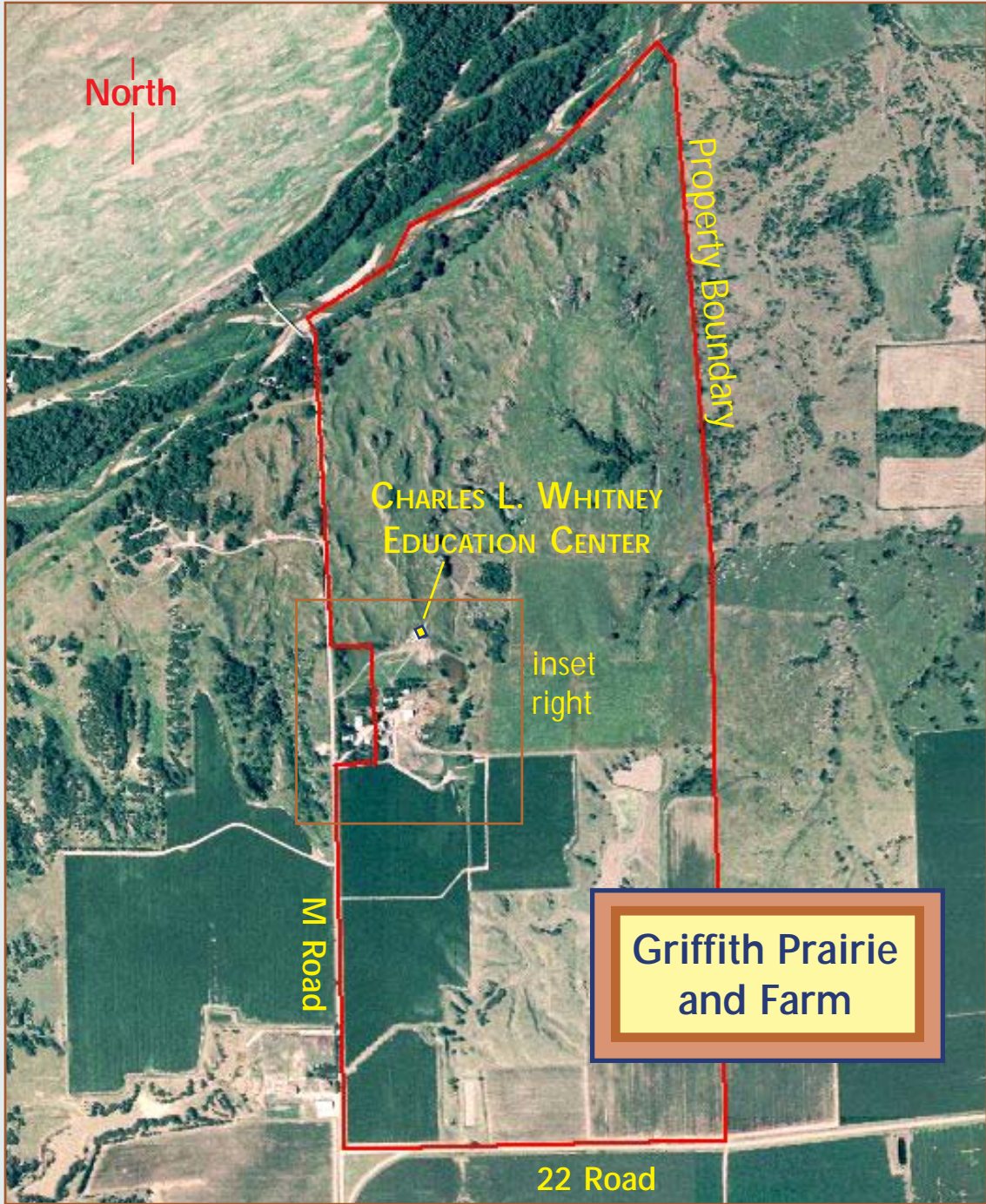


December 2008 progress:
south entry and elevator
shaft structural framing,
main floor, windows, doors
and wall sheathing.

Architects

Building design by Lee Schriever;
Assisted by Mark Ratzlaff





CENTER LOCATION

- Griffith Prairie and Farm, 4 miles west of Marquette, 9 miles north of Aurora.
- Building Site Location: North of Griffith farmstead at the south end of the bluff prairie.





© 2008 ErnestOchsner.com

GATEWAY TO THE PRAIRIE AND THE WORLD

The Charles L. Whitney Education Center will bring a new dimension to the work of Prairie Plains Resource Institute. It will be the activity center and meeting place of a developing educational campus designed to teach people of all ages about the land. The strikingly beautiful native prairie landscape of Griffith Prairie and Farm, situated along the Platte River in northern Hamilton County, Nebraska, typifies the Great Plains. It is a perfect place to learn, to celebrate the land and its people and to discuss new ideas for the future.

This building is the first major educational component of the Prairie Plains campus, adding to the existing agricultural buildings, which primarily



Gateway to nature . . .



to a learning adventure . . .

serve prairie restoration and stewardship purposes. Plans for the future include another building for lodging students and visitors, a greenhouse in which to grow native plants and an educational equipment shed.

Come to learn; go teach! Our educational goal is to become global in scope, while most of our land work will be centered in Nebraska. This Center will be an important tool used to enhance and educate about all Prairie Plains activities. Programs will expand to include such things as workshops, seminars, family programs, student exchanges. Much of the future developmental process will include college and graduate school internships, encouraging the youth to share what they learn as they go forward in their lives.



to history . . .



to beauty . . .



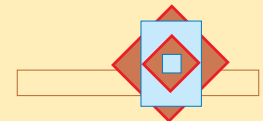
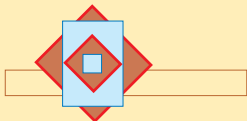
CHARLES L. WHITNEY EDUCATION CENTER

A SCENIC AND HISTORIC
NATURAL AREA AND FARM SETTING FOR:

- ❑ **COMMUNITY GATHERINGS AND ACCESS TO THE PLATTE RIVER**
 - Community events such as musical performances and plays.
 - Literature, history, arts & crafts.
 - Recreation: extensive hiking trails; Platte River access.

- ❑ **HANDS-ON EDUCATION ABOUT NATURAL AND CULTURAL RESOURCES**
 - **SOAR** (Summer Orientation About Rivers youth daycamp).
 - Statewide **SOAR**, or similar, program development & coordination.
 - Leadership and educator training.
 - Education programs for families.
 - Great Plains Geographic Information System (GIS) applications.

- ❑ **PUBLIC PARTICIPATION AND FINDING COMMON GROUND**
 - Public participation forums & working group development meetings.
 - Natural resource collaborative planning.
 - Leadership training workshops integrating ideas of culture, environment, and economics.





CHARLES L. WHITNEY EDUCATION CENTER

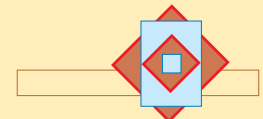
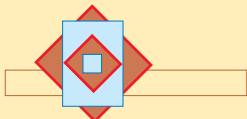
A SCENIC AND HISTORIC
NATURAL AREA AND FARM SETTING FOR:

□ RESTORING STREAM CORRIDORS; WATERSHED MANAGEMENT

- Strategic planning and implementation for stream corridor restoration.
- Integrated watershed restoration and management initiatives.
- Leadership development and group capacity building.
- Restoration assessment and planning with respect to biodiversity, economic and social viability, aesthetics and management needs.
- Workshops and seminars on public and private land restoration.
- Watershed land use and planning workshops.

□ COLLEGE AND GRADUATE STUDENT INTERNSHIP PROGRAM

- Hands-on ecological restoration - interns involved in all design and field related aspects of ecological restoration projects.
- Restoration, research and stewardship involving agricultural rangelands.
- Curriculum study of global restoration activities, restoration science, history and philosophy.
- Independent research projects; naturalist education.
- Investigation of connections between agriculture, nature and community on the Great Plains.
- Assisting in Prairie Plains educational activities; learning to teach.





Board of Directors:

Kelly Kindscher, Lawrence, KS
Jack Potts, Aurora
Mike Powell, Aurora
Randy Ruppert, Fremont
Bill Saeger, Fremont
Bill Snyder, Auburn
David Vetter, Marquette
Lindsay Vivian, Grand Island
Steve Winter, Stillwater, OK



1307 L Street, Aurora, NE, 68818, 694-5535, ppri@hamilton.net